



Autoscope® **OPTiVu**

High-Performance Video Detection

Autoscope® OptiVu is taking video detection to new heights by offering smart object detection algorithms powered by AI and machine learning. The camera and processor provide high performance vehicle detection, bicycle and pedestrian detection, enhanced traffic data collection in real-time, and Smart City readiness with connectivity to other systems.

Building on more than three decades of proven above ground video detection experience, Autoscope OptiVu delivers the highest levels of innovation and performance in an easy-to-use detection solution that supports a variety of traffic management and ITS applications. The performance of OptiVu is robust and reliable, and is based on a new hardware platform designed to enable future capabilities and solutions.



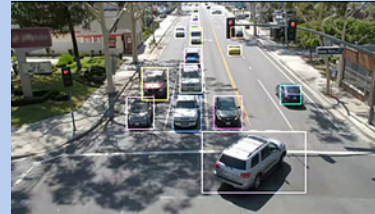
Key features

- AI-powered detection using advanced machine learning algorithms
- Object tracking with classification
- Pedestrian and bicycle detection and counts
- Smart City readiness with connectivity to other systems

Smart City ready with vehicle, bicycle, and pedestrian detection



Autoscope® OptiVu provides the foundation every city requires to attract new residents, cultivate a flourishing economy, and offer improved living through safer roadways.



Detection system data analytics and reporting

Enhance your Autoscope® OptiVu video detection system with the advanced, cloud-based data reporting, analytics, and monitoring capabilities of Centrac's® +Detect. +Detect automatically and virtually reports traffic conditions and critical datasets, such as road user classifications, volumes, turning movements, speeds, and signal performance metrics.



With +Detect, you can automatically access and leverage your detector system's deep data sets for all-new levels of performance measures, without any additional installation requirements. +Detect also serves as an extension to the Centrac's Mobility Platform, Econolite's industry leading cloud-based Advanced Transportation Management System (ATMS).

Specifications	Autoscope OptiVu Camera
Power	37V to 57V, (Max power 12.95W)
Camera	<ul style="list-style-type: none"> CMOS image sensor Minimum Illumination: 0.004 to 0.0004 lx Resolution: HD 1080p White balance: auto
Lens	<ul style="list-style-type: none"> Focal length: 10X zoom lens Horizontal: 62°- 7.6° Vertical: 34.4°- 4.4° Focal length: 4.7 - 47mm
Housing	<ul style="list-style-type: none"> Aluminum die cast and resin Waterproof and dust-tight housing (IP67) Hydrophilic faceplate coating Adjustable sun and weather shield with drip guard
Environmental	0 to 90% non-condensation
Temperature	-40° to 167°F (-40° to +75°C)
Dimensions	6 in W x 4.4 in W x 14.7 in L (152.4 mm H x 111.8 mm W x 373.4 mm L)
Weight	3.8 lbs (1.7 kg)
Regulatory	<ul style="list-style-type: none"> FCC Part 15, Subpart B, Class A regulations NEMA TS2 2021
Warranty	Three (3) year

Specifications	Autoscope OptiVu Processor
Power	24 to 48 VDC
Communication	<ul style="list-style-type: none"> 10/100/1000 WAN and Ethernet ports USB 2.0 and 3.0
Environmental	<ul style="list-style-type: none"> Meets TS-2 standards Fan-less design
Temperature	-29° to 165°F (-34° to +74°C)
Dimensions	2.165 in H x 9.25 in W x 4.92 in L (55 mm H x 235 mm W x 125 mm L)
Weight	6.5 lbs (2.95 kg)
Regulatory	<ul style="list-style-type: none"> FCC Part 15 NEMA TS2 2021
Warranty	Three (3) year