



DMS

Dynamic Message Signs

Module Overview

The Centracs DMS module is designed to provide control of DMS by allowing for real-time updating of new messages. Critical traveler messages can be uploaded to Centracs from the DMS sign, configured in Centracs, then downloaded to the sign. Messages can be activated on demand, scheduled to run on certain days and times, or configured to automatically update when certain events occur.

Benefits to Transportation Agencies and the Traveling Public

The Centracs DMS module gives agencies direct and immediate control to update and display critical traveler information messages throughout a roadway network. By providing timely traffic conditions or incident messages, Centracs DMS helps provide congestion mitigation information and increase roadway efficiencies and safety. Agencies are also able to provide real-time information to motorists about rapidly changing traffic conditions so they can avoid delays and dangerous situations.

Key Features

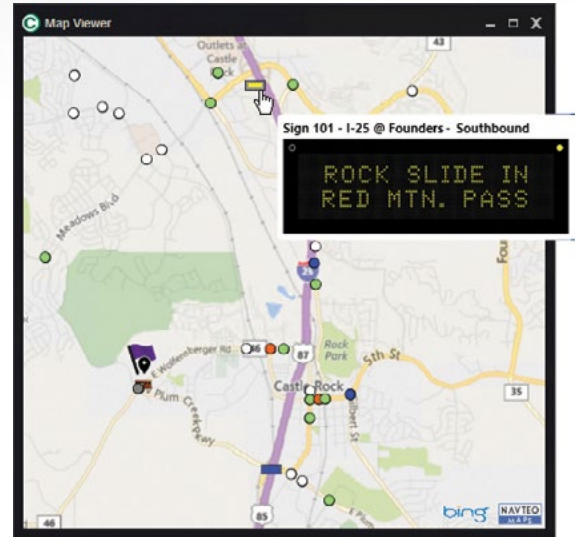
- ***Designed to provide complete control of DMS***
- ***New messages updated in real-time***
- ***Critical traveler messages can be uploaded and downloaded to the sign or configured to automatically update***

How the Centrac's DMS Module Works

Within the Centrac's DMS module, each defined DMS has a status display that shows the current message on the sign, the state of communications between Centrac's and the sign, the state of the beacons (on or off), the current control mode of the sign (remote or local), and any errors being reported by the DMS, such as climate control errors and message syntax errors.

The Map Viewer feature is used to monitor DMS devices, each of which is shown as an icon on the map. The map icons are color-coded so information can be quickly accessed about the status of a specific DMS just by glancing at the map. By holding the mouse pointer over the DMS icon on the map, Centrac's shows a miniature representation of the current message shown on the sign.

DMS commands can be issued manually from the DMS status display, from the map, from the Entity Tree, or via a manual command. Alternatively, commands can be scheduled to run at specific times via the scheduler feature. You can also use triggers to configure Centrac's to send specific messages when certain events occur.



DMS Map Viewer

System Requirements

- **Daktronics, Skyline, and Adaptive DMS with the latest firmware**
- **Contact your local Econolite Account Manager or Distributor for specific system requirements.**



Learn more
about additional
Centrac's capabilities



www.econolite.com



1250 N. Tustin Avenue, Anaheim, CA 92807



sales@econolite.com



714-630-3700