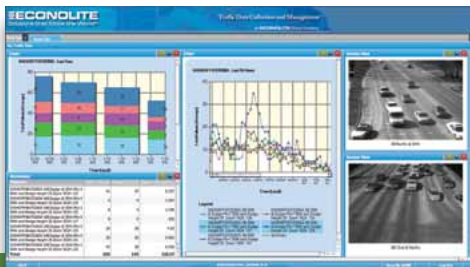


DCMS.2

Data Collection and Management System



Description

Imagine having the ability to make immediate traffic management decisions based on reliable data collected, archived, and displayed on a secure password-protected web site. This is a critical capability of Intelligent Transportation System (ITS).

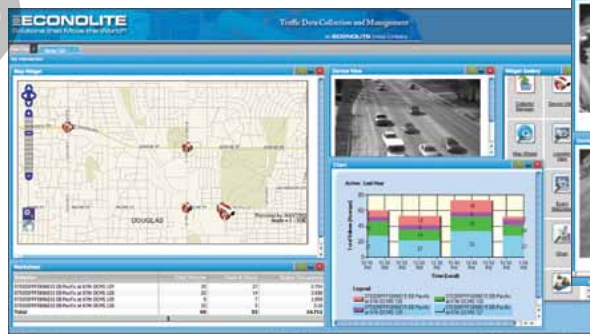
Today, Econolite's DCMS.2™ provides the capability to monitor, in real-time, the traffic and travel conditions of intersections, mid-blocks, or freeways via vehicle detection devices. These valuable detection systems become automated virtual count stations that gather and distribute traffic data without interruption.

Agency officials agree that enhanced center-to-center communication is the key to faster incident response. Automated data collection provides the means for key transportation managers to make informed decisions that will keep traffic flowing, alert road crews to the scene, or effect real-time changes to traffic signal timing to improve current or anticipated traffic conditions.

DCMS.2 can continuously bring streaming video and real-time data back to a personalized web site, and then share information with anyone in the local DOT, other local state and federal agencies, and emergency responders.

Features

- Designed for scalability
- "Save My DCMS" personalized dashboard Widget configuration
- Automated traffic data collection, distribution, and inter-agency sharing
- Rich Internet or Intranet Application (RIA) supports Microsoft® Internet Explorer®, Mozilla® Firefox®, and Apple® Safari® web browsers
- Real-time data display, archiving, reporting and sharing
- Advanced data analysis and processing
- Real-time data logging and archived data compilation
- Visual validation via snapshot images and streaming video
- Annual maintenance subscription (option)



Benefits

- Customer-owned solution
- Delivering a customer-oriented transportation data management solution
- Flexible Internet accessibility
- Time-saving data summaries and reporting
- Personalized and secure web site
- Historical data comparisons for result measurement
- Easy setup and hassle-free monitoring
- Promoting partnerships between public agencies and private companies

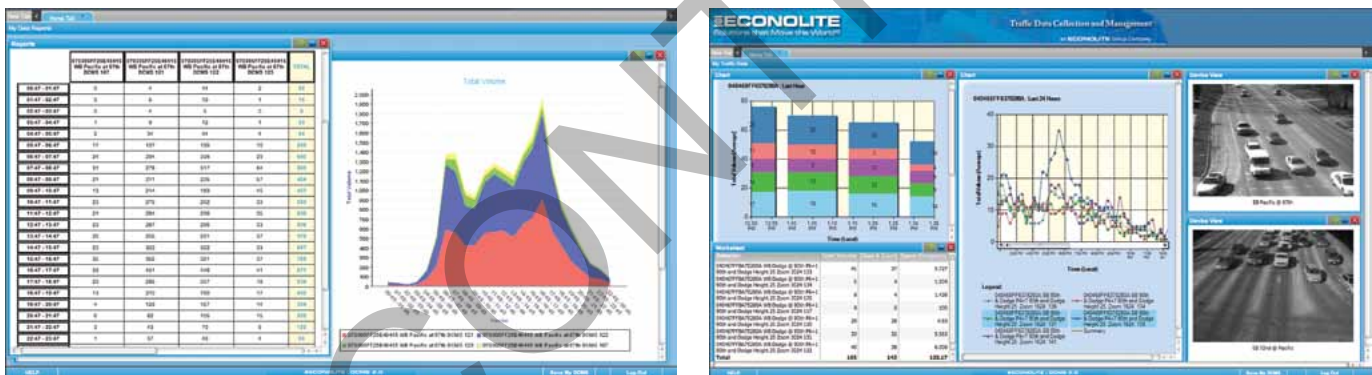
Applications

- Freeways
- Intersections
- Midblock
- Tunnels
- Bridges
- Parking structures and parking lots
- Tollways
- Shopping centers
- Temporary, construction, and work zone safety
- Intelligent, remote surveillance

Setup & Operation

DCMS.2 is a reliable data collection and management solution made possible via numerous communications media. Ethernet on fiber, copper, CDMA, and wireless Ethernet are a few of the most common solutions. For example, traffic data that resides within the Autoscope Solo Terra video detection device will be extracted for real-time data polling at user-defined time intervals.

DCMS.2 traffic data is aggregated for archiving, analysis, and formatting. DCMS.2 servers may be Econolite-managed or customer-owned and operated. The data is made available to designated agency personnel and authorized users via a secure code-protected web browser. In addition, DCMS.2 will provide a web interface incorporating the latest in user-definable dashboard Widget mapping, reporting, and streaming video. Selectable tabs provide the user with the ability to create custom viewing of priority Widgets as well as communications alert notifications. Real-time polling and stored traffic data includes: volume, occupancy, speed, density, headway, and up to five (5) vehicle classifications in 5-minute time intervals.



Detection Systems Supported

- Autoscope Product Suite (Solo Terra, Solo Pro, 2020™, & RackVision™, and RackVision Terra)

Data Service

- Internet Protocol (IP) account setup
- Detector file creation
- Password-protected website
- User personalized website design, hosting, and data archiving
- Scheduled data distribution through user-controlled, Internet-based Graphical User Interface (GUI)

- Traffic data analysis in Microsoft® Excel, Word, and Adobe PDF format

Service Support Options

- Annual support & maintenance subscription
- Mapping updates
- Software updates
- System enhancements

Communications

- Ethernet communications
- Wireless cellular modem, Code Division Multiple Access (CDMA), or General Packet Radio Service (GPRS)
- TCP/IP protocol

© 2012 Econolite Control Products, Inc. All rights reserved. Econolite Control Products, Inc. reserves the right to change or update these specifications at any time without prior notification